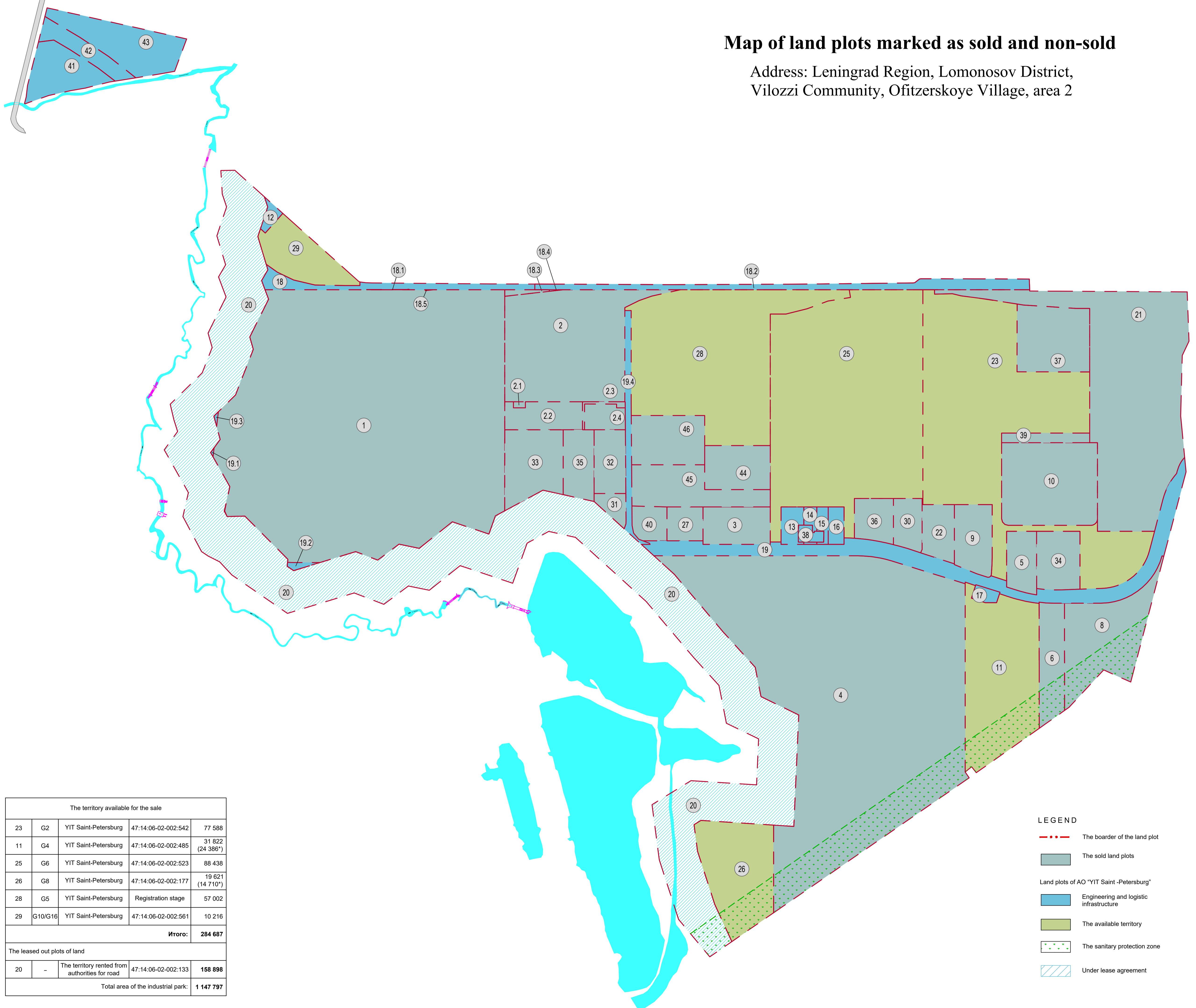


Map of land plots marked as sold and non-sold

Address: Leningrad Region, Lomonosov District, Villozzi Community, Ofitzerskoye Village, area 2

Legend of land plots				
No	Land plot	Company name	Cadastral №	Total area, m²
The sold land plots				
1	G1	Gorigo	47:14:06-02-002:356	188 641
18.1	G10/G16		47:14:06-02-002:354	25
18.3	G5		47:14:06-02-002:351	500
2	G5	Siemens Gas Turbines Technologies	47:14:06-02-002:314	37 889
2.1	G5		47:14:06-02-002:352	200
2.2	G5		47:14:06-02-002:445	5 833
2.3	G5		47:14:06-02-002:501	498
2.4	G5	47:14:06-02-002:502	2 826	
3	G9	Ponsse Center	47:14:06-02-002:176	6 991
27	G11		47:14:06-02-002:477	3 384
40	G5		47:14:06-02-002:557	3 200
4	G3	Atria Pit Product	47:14:06-02-002:179	165 916
5	G2	AMG	47:14:06-02-002:256	5 000
6	G4/G7	Dermosil	47:14:06-02-002:248	8 183
8	G7	Trier-SPB	47:14:06-02-002:249	18 805
9	G2	Private investor	47:14:06-02-002:365	7 040
10	G2	SMC Pneumatik	47:14:06-02-002:420	21 900
39	G2		47:14:06-02-002:539	2 346
30	G6	Luzhs kaya	47:14:06-02-002:437	4 000
33	G5	Hakel	47:14:06-02-002:479	11 000
34	G2	Technobearing	47:14:06-02-002:482	7 000
35	G5	GlavAutosnab	47:14:06-02-002:493	5 845
36	G6	Vertek	47:14:06-02-002:491	4 580
21	G2	SZM	47:14:06-02-002:573	62 356
22	G2	Orlan	47:14:06-02-002:521	4 823
37	G2	List	47:14:06-02-002:541	13 090
31	G2	Soteks	47:14:06-02-002:563	1 962
32	G2	Private investor	47:14:06-02-002:564	5 561
44	G5	Fiziotehnika	47:14:06-02-002:599	8 000
45	G5	Ekoniva	47:14:06-02-002:598	11 614
46	G5	Private investor	Registration stage	10 000
Total:				629 008
Land plots of AO "YIT Saint-Petersburg"				
Engineering infrastructure of Industrial Park				
12	G10/G16	YIT Saint-Petersburg	47:14:06-02-002:425	940
13	G12	YIT Saint-Petersburg	47:14:06-02-002:587	2 106
14	G13	YIT Saint-Petersburg	47:14:06-02-002:588	824
15	G14	YIT Saint-Petersburg	47:14:06-02-002:589	970
38	G12/G13/G14	YIT Saint-Petersburg	47:14:06-02-002:590	998
16	G15	YIT Saint-Petersburg	47:14:06-02-002:168	1 648
17	G4	YIT Saint-Petersburg	47:14:06-02-002:429	956
19	G17/1/G17/2	YIT Saint-Petersburg	47:14:06-02-002:566	23 686
19.1	G1	YIT Saint-Petersburg	47:14:06-02-002:357	37
19.2	G1	YIT Saint-Petersburg	47:14:06-02-002:358	398
19.3	G1	YIT Saint-Petersburg	47:14:06-02-002:359	81
19.4	G5	YIT Saint-Petersburg	47:14:06-02-002:449	3 970
41	666	YIT Saint-Petersburg	47:14:0603001:9330	8 362
42			47:14:0603001:9331	4 497
43			47:14:0603001:9329	12 151
Total:				61 624
Land plot railway				
18	G10/G16	YIT Saint-Petersburg	47:14:06-02-002:562	5 365
18.2	G10/G16	YIT Saint-Petersburg	47:14:06-02-002:241	9 377
18.4	G5	YIT Saint-Petersburg	47:14:06-02-002:350	29
15.5	G1	YIT Saint-Petersburg	47:14:06-02-002:360	9
Total:				14 780

The territory available for the sale				
23	G2	YIT Saint-Petersburg	47:14:06-02-002:542	77 588
11	G4	YIT Saint-Petersburg	47:14:06-02-002:485	31 822 (24 386*)
25	G6	YIT Saint-Petersburg	47:14:06-02-002:523	88 438
26	G8	YIT Saint-Petersburg	47:14:06-02-002:177	19 621 (14 710*)
28	G5	YIT Saint-Petersburg	Registration stage	57 002
29	G10/G16	YIT Saint-Petersburg	47:14:06-02-002:561	10 216
Итого:				284 687
The leased out plots of land				
20	-	The territory rented from authorities for road	47:14:06-02-002:133	158 898
Total area of the industrial park:				1 147 797



LEGEND	
	The boarder of the land plot
	The sold land plots
Land plots of AO "YIT Saint -Petersburg"	
	Engineering and logistic infrastructure
	The available territory
	The sanitary protection zone
	Under lease agreement